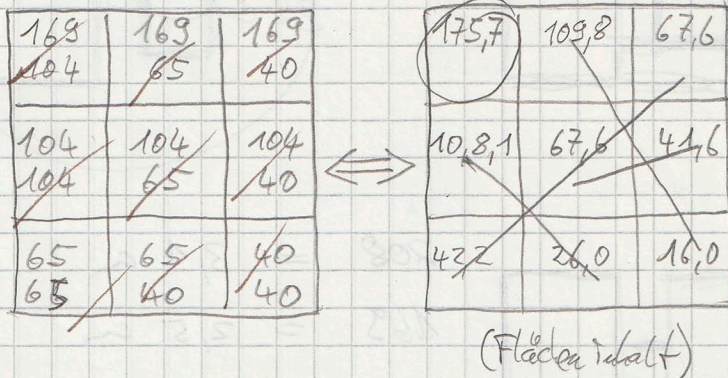


Problemlösung: (I)

A) Format-Reihe: 158 (- 492 Breite)
 (goldener Schnitt
 $= 0,61804$)
 136
 65
 37 cm

B) Matrix möglicher Formate:
 (außer $169/169$)

Formatdifferenz 1:11



C) mögliche Ausgleichs-Kombinationen:

(Reihe, die keine zu kleine Gesamtfläche übriglässt)

und Varianten

(Restflächen wiederum aus Formatreihe!)

Formatdifferenz 1:1,6

① $\frac{169}{104}$ (altern) → Rahmenvorgabe

($175,7$)

② $\frac{104}{104} + \frac{65}{40}$

($134,1$)

③ $\frac{169}{65} + \frac{40}{40}$

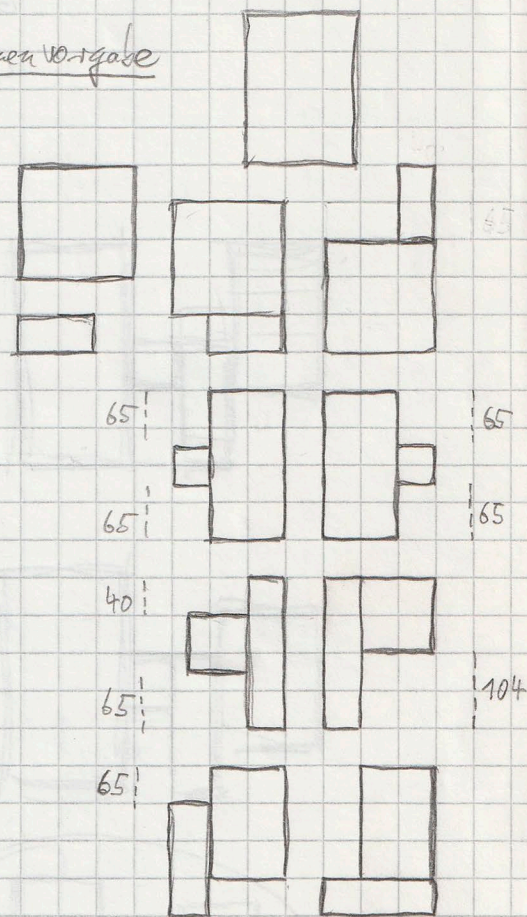
($125,8$)

④ $\frac{169}{40} + \frac{65}{65}$

($109,8$)

⑤ $\frac{104}{65} + \frac{104}{40}$

($109,2$)

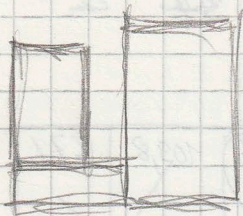
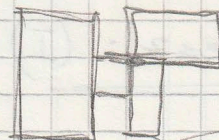
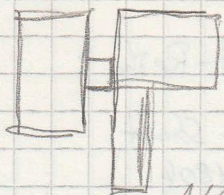


D) mögliche Kombinationen:

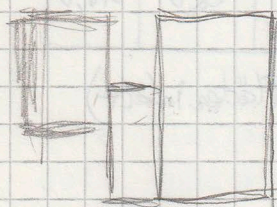
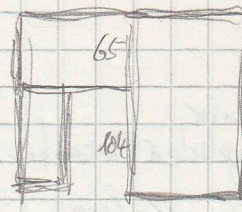
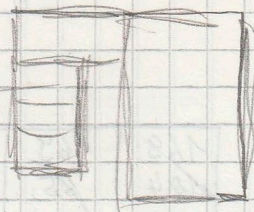
(jede nur 2x, jeweils andere Verbindung und Variante, dabei maximale Gesamtfläche aller fünf)

Formatdifferenz 1:1,2

Ⅰ	Ⅱ	Ⅲ	Ⅳ	Ⅴ
1	1	2	2	3
4	5	3	4	5
285,5	284,9	259,9	243,9	285,0



169
84
—
253



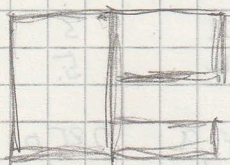
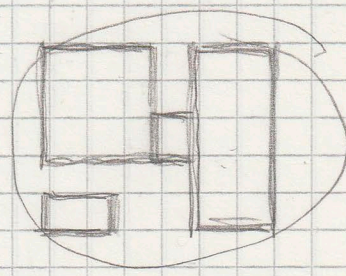
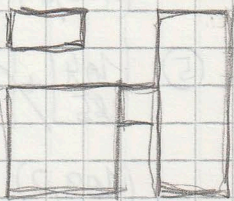
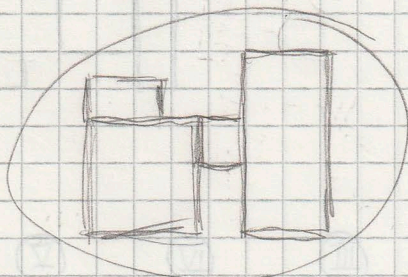
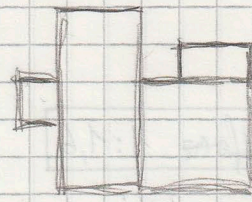
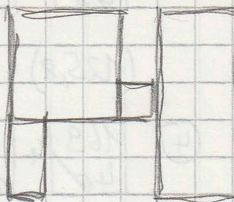
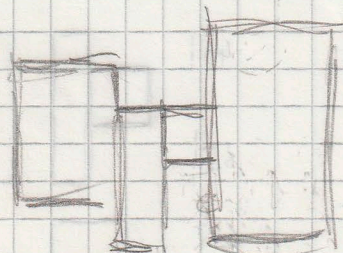
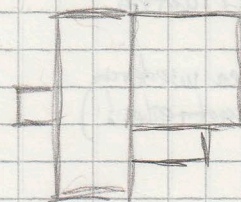
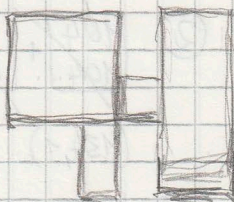
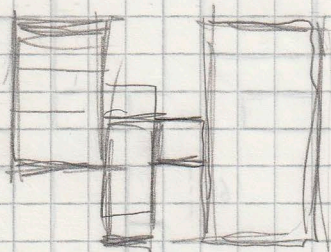
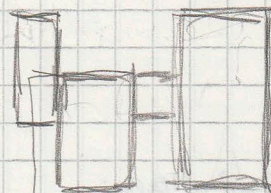
208 = 3,1 a

169 = 2,5 a

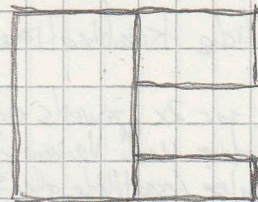
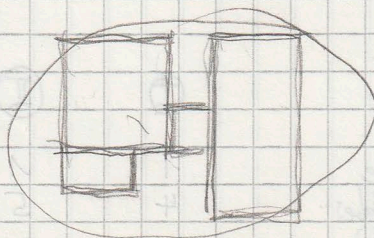
104 = 1,6 a

65 = 1,0 a

40 = 0,6 a



65
169 65
40



Variantechnik:

Original:

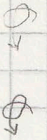
Krebs (Spiegel):

Umkehrung:

Krebsumkehrung:

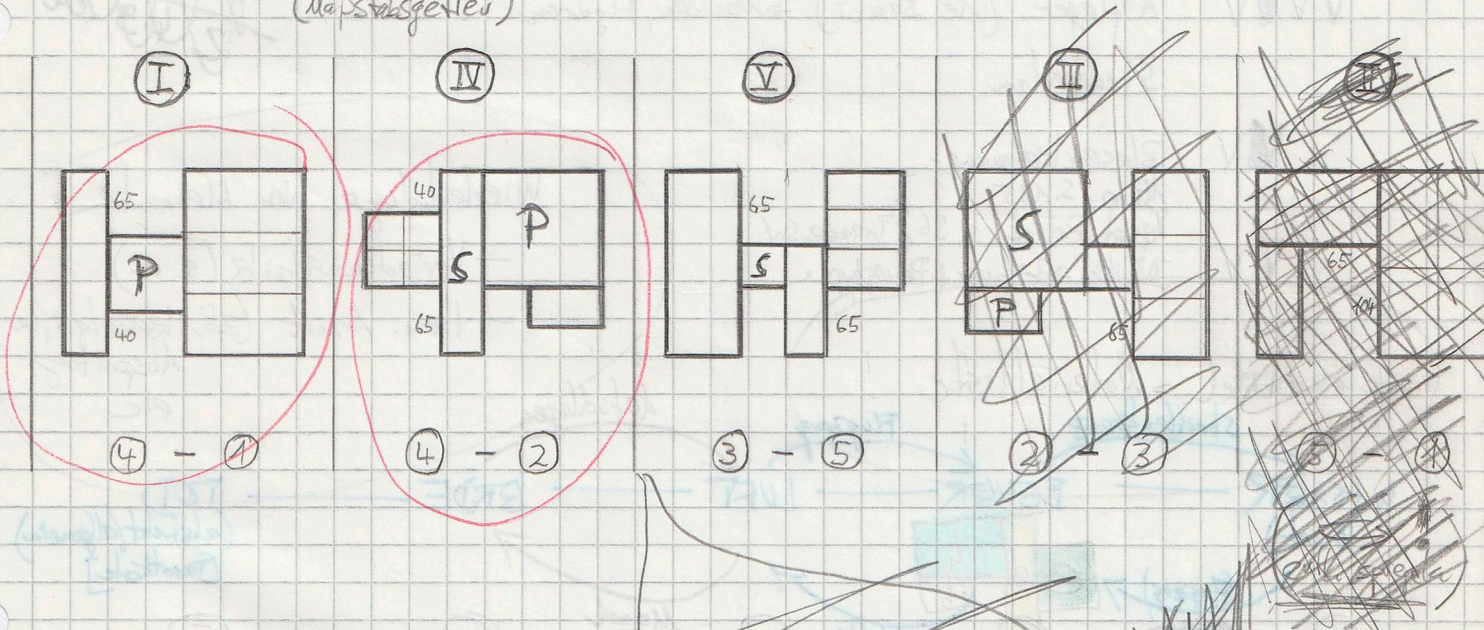


$(\cdot) \rightarrow 180^\circ$ um Achse drehen



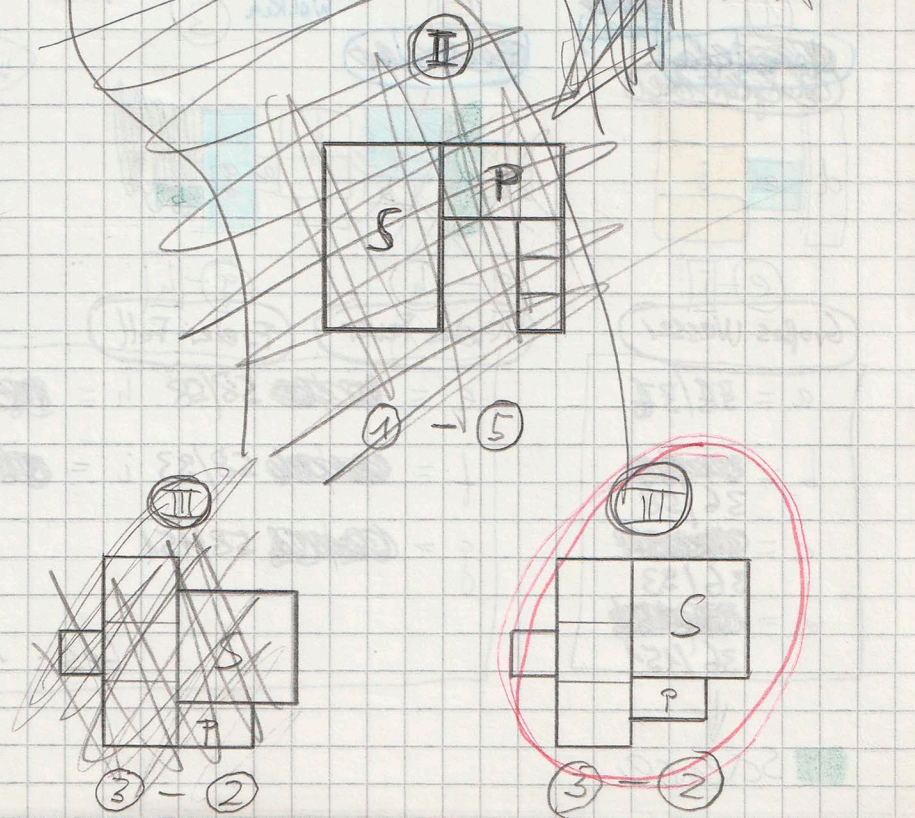
REIHENFOLGE I-IV-V-III-II

⇒ Bearbeitung der endgültigen Form (Variantenauswahl + Links/Rechts-Wahl)
(Maßstabgetreu)



~~Steps:~~
~~169 169~~
~~104 65~~
~~104 65 104~~
~~65 65 40~~

- 169/104 Stamps / Science ✓
- 169/65 Stamps /
- 169/40 Science /
- 104/104 Presse / Science ✓
- 104/65 Stamps / Presse ✓
- 104/40 Stamps /
- 65/40 Presse /
- 65/65 Stamps / Presse ✓
- 40/40 Science /



Technik ~~V/V~~ (auch Texte) monochrom colorieren ~~(s. Lehrbuch)~~

Materialien: ~~V/V/V~~ (auch über Zeichnung) gesprühte Negativschablone (Musterwände)

~~inverse Schrift~~

~~Arabische Schrift (s. Lehrbuch)~~

V Bild rastern #

V Sternbilder

~~Noten (Bach-Manuscript) über Projektion~~

V/V/V Zeichnung (s. Kunstbücher) " "

(V)(V) ~~Transparente auf Metall (Kupfer) aufkleben~~ zB

V/V/V Aufleger (wie Bombi) → Masken, Figuren
Stadtplan

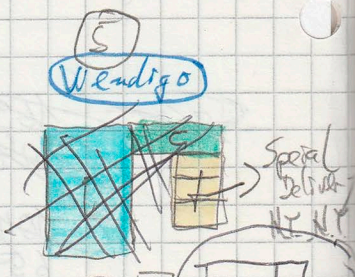
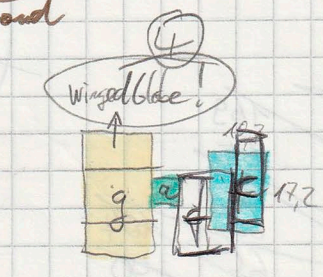
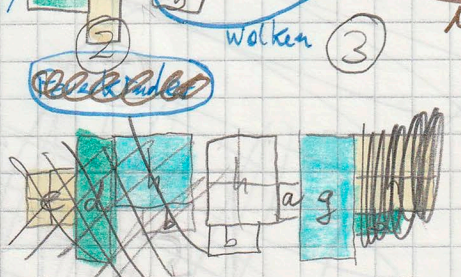
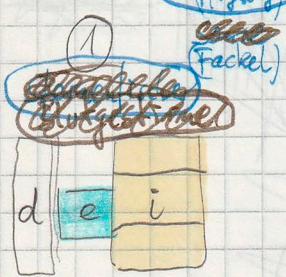
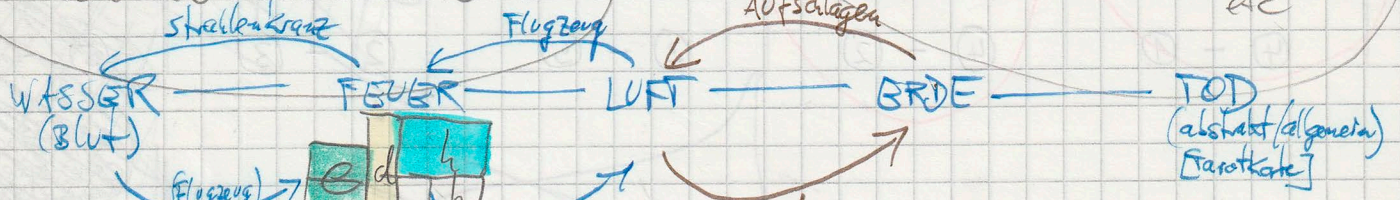
V/V Blasen kammer
Miro S. 125
Kopt. Relief S. 96 } Transp.-SW
V/V Dürer Zeichnung + Perspektive

DER SCHLAF
DER VERKUNFT

~~0.01.20~~
1.4.20
11.06.40
249.00

Wiederholung von Elementen
- Variationsreichtum (s. o.)
- them. Arbeit (zB. Homal größer)
Abspaltung etc

Einzelworte = Materialliste!



Großes Wasser

Kleine Feuer Freier Fall

a = ~~36/36~~
b = ~~36/58~~
c = ~~36/33~~
d = ~~36/151~~

e = ~~58/58~~ h = ~~33/33~~
f = ~~58/33~~ i = ~~33/151~~
g = ~~58/151~~

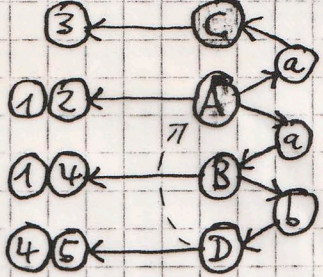
Stamp Teilung
Presse

Ges.: 151/186

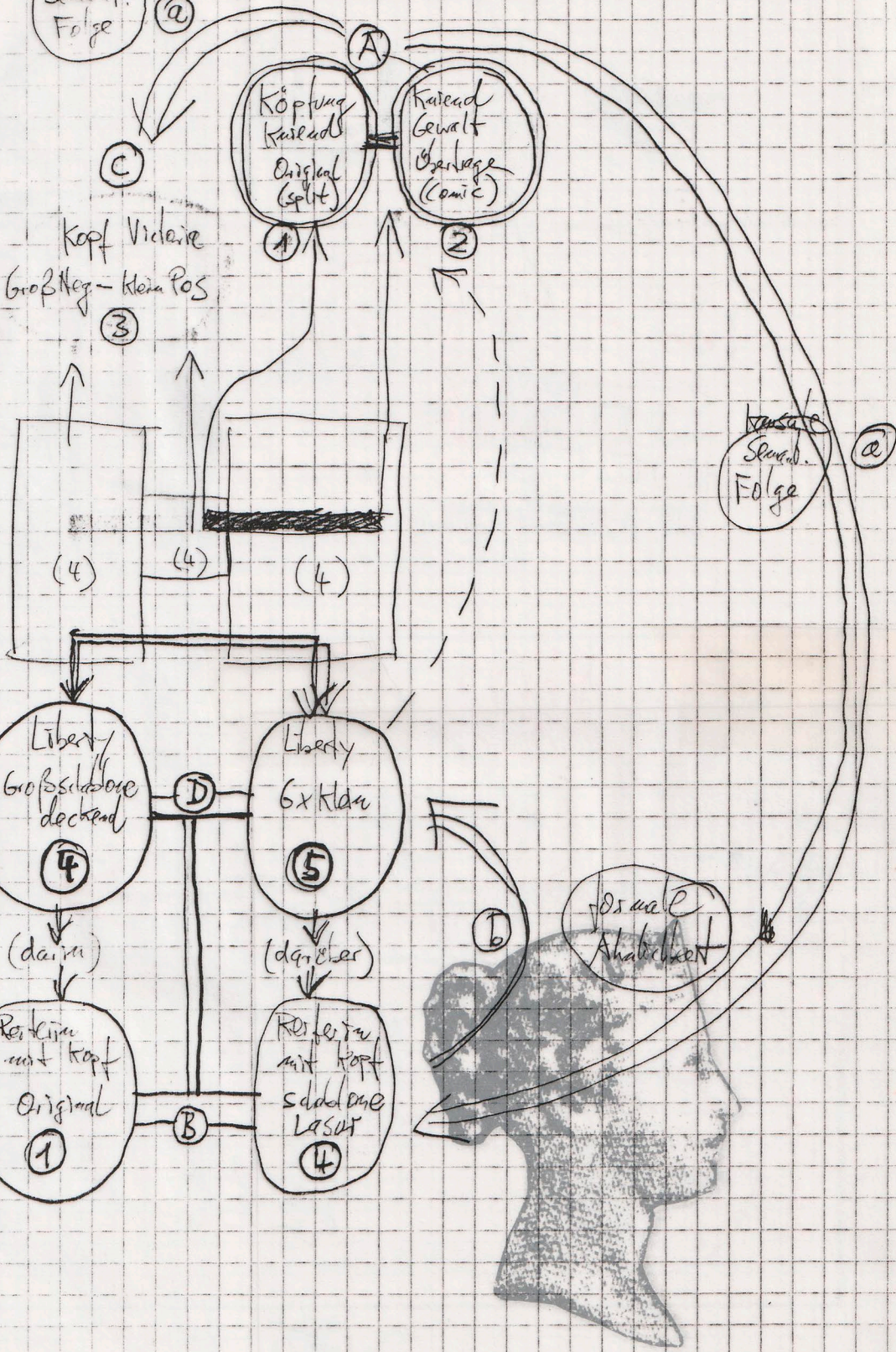
Science

DYNAMISCH NARRATIV

1



Kreislauf
Sensitiv.
Folge



Einzel:

- Blasenfamilie
- Idoll
- Hinführung Victoria

visuelle
Ähnlichkeit

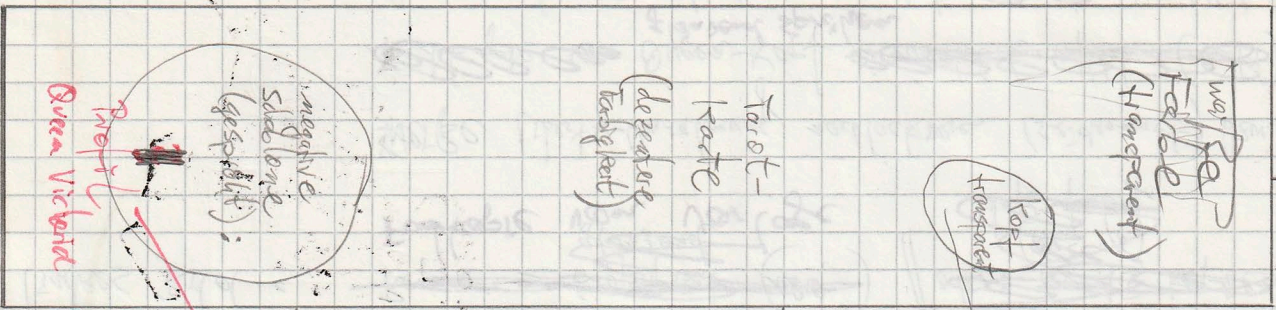
Messstab
1:6
= Original
6

2812 x 347

Rand Neu = 0,16 cm

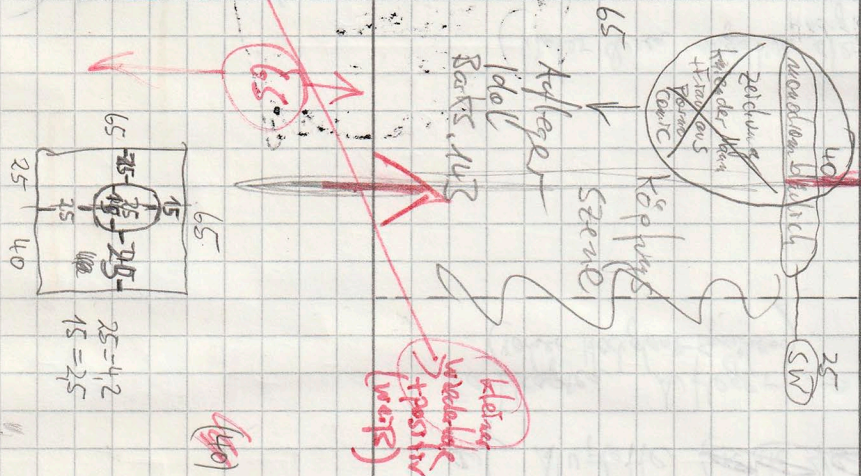
1693
28,04
0,16

40 / 6,5 + 0,16

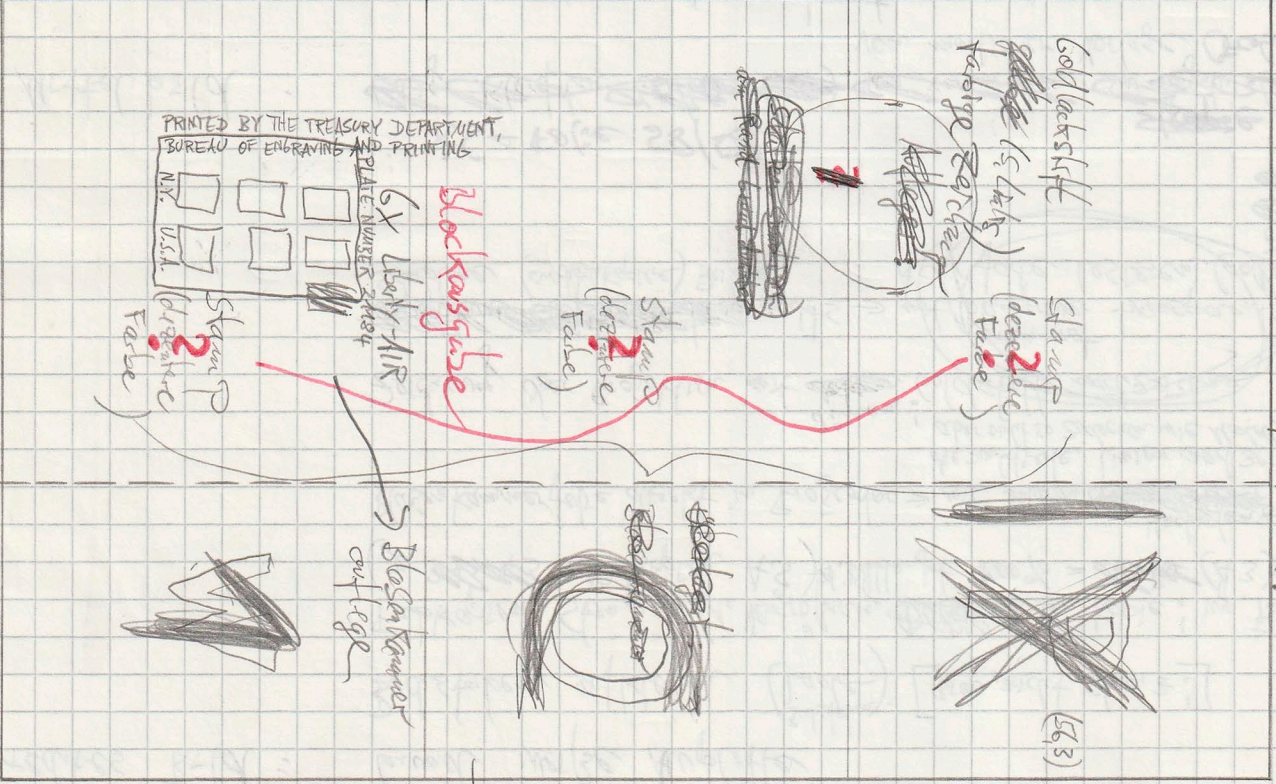


40

65 / 10,65 + 0,16



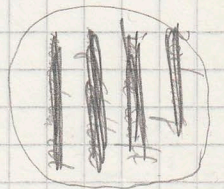
104 / 17,15 + 0,16

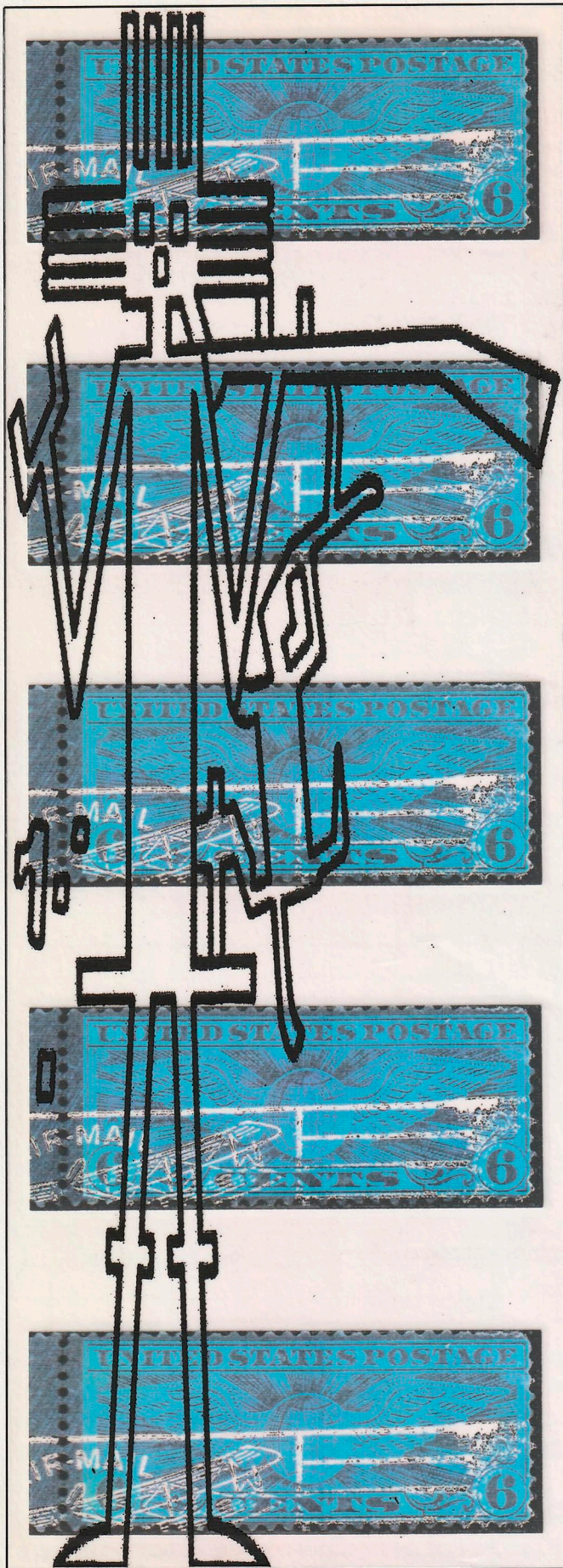


Original forber (64)

Mondklee Blatt (grau) Original forber (40)

1693 / 28,0
war Reiter
Aufplatte





PRINTED BY THE TREASURY DEPARTMENT, BUREAU OF ENGRAVING AND PRINTING

offe

(Suchstaben) [Lade] [grau, nicht schwarz!]

Vergrößerung ~~100%~~ von Kopie! wg. Farbe)
AS) 1. Bülle-Jet 1000% = ~~26x30~~ (A3)

Im Projektor → mit schwarzen ^{Hochglanzlack} ~~...~~
die punktförmige Linien nachzeichnen
aber nicht so zudecken wie Modell
dünnem! Goldstift nachzeichnen
mit ~~...~~

rechts → mit ^{braunrot} ~~...~~ transparenter
Acrylfarbe lasieren (Golde)

~~...~~ ^{stärke} ~~...~~
von verarbeiteter ~~...~~
von montierter Vorlage (Folie)

^{braunrot} ~~...~~ ^{tege} ~~...~~
→ aufziehen

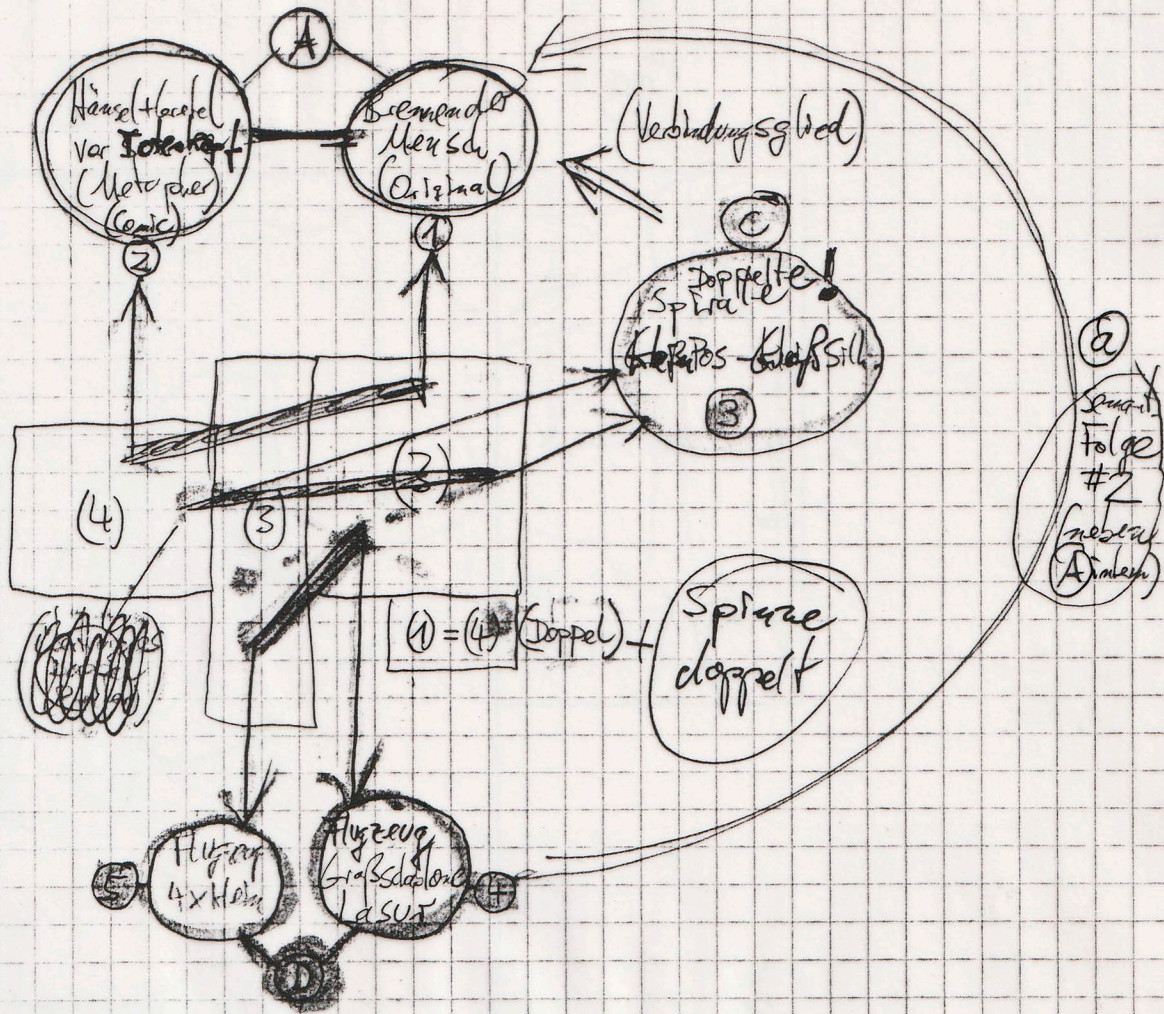
~~...~~ [weiss] !!
~~...~~ ~~...~~
stoge ~~...~~

ung nachlackieren (Seidenmatt) bzw. sprühen
~~...~~
kopie ~~...~~
kopie ~~...~~

→ Folie aufziehen (Sprükleber)

STATISTISCH
BESCHREIBEND
(Symbolischer)

2



EINZEL:

- ~~Handwritten scribbles~~
- ~~Handwritten scribbles~~
- ~~Handwritten scribbles~~
- Porocomic
- Skandid
- Tokeraf

(s. "ES")
Handwritten scribbles

151 185
115 113
70 70
42 43
28 27
16

156
37
55

(38)

(70)

(38)

30

(115)

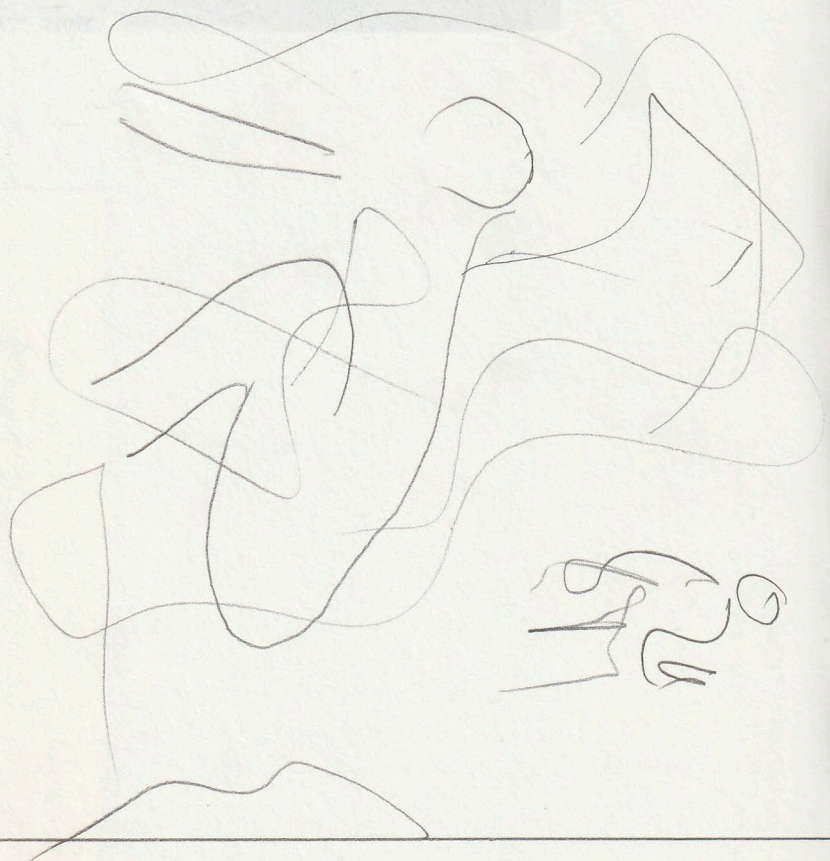
15

8

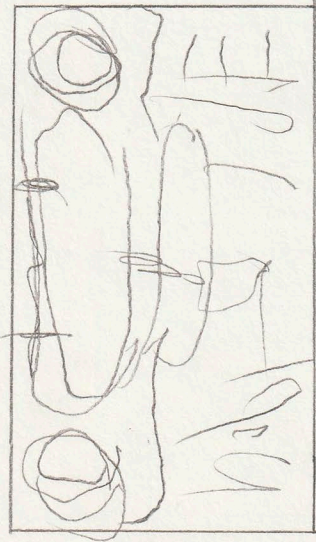
(32)

(48)

(110)
(125)



(113)



(38)

(76)

(70)

Hole 185
Scale 228

PLATE NUMBER 21184

PRINTED BY THE TREASURY DEPARTMENT,
BUREAU OF ENGRAVING AND PRINTING.

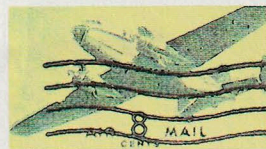


N. Y.

U.S.A.

PLATE NUMBER 20027

PRINTED BY THE TREASURY DEPARTMENT — BUREAU OF
ENGRAVING AND PRINTING

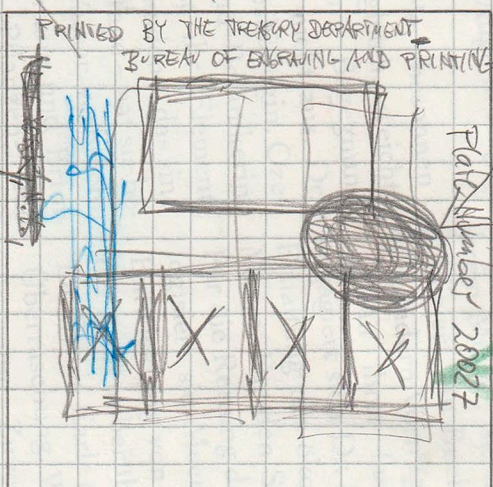


WASHINGTON, D.C., FEBRUARY 13, 1945



~~See page 1~~
Sex-Figur-Silhouette
Schwarz

Gewitter
Negativ-positiv
auf Karte
(10)



von Se
Kupfer

Bahn-Manuskript
gpm

21182 = 16 = 7

20027 = 14 = 2

20046 = 12 = 3 (Philadelphia) (?)

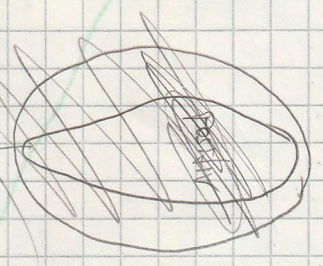
20008 = 10 = 1 (Los Angeles) (Cal)

21185 = 14 = 5 (San Francisco) (Cal)

Cable
Schrift
(weil blank)

(65)

410



Bassa-Roman
als Folie
auf Blatt
(18)

MARJOL
NEBATH

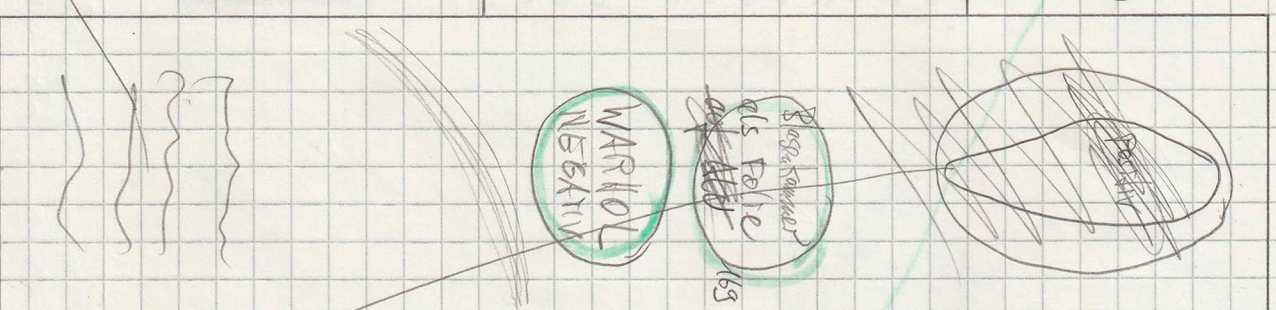


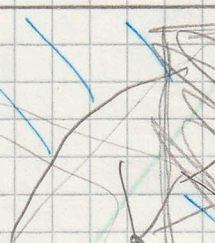
Plate 1

104

monogram
grünrotlich

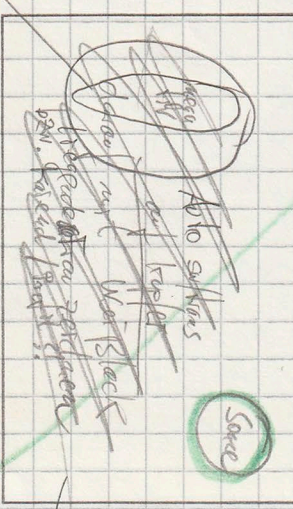
spiegelbildlich
negativ
auf Karte

organische
Masse
Flächen
100/3
(horiz. Formate)



steht bild
(Spiegelbild)
[Some holes Fugenschnitt Anwahl Karte]
(Schöne wachen!)

(20) 104



100/64/107

Sche

40/67

104

spiegelbildlich
Fugenschnitt
Fakt negativ
nicht positiv
(Leserend!)

Gewitter
Negativ
=> Weis-
Feldman

Library Federal aus US-Make 501 ab 1066
via Oval (mit Kopierstation)

~~Handwritten scribbles~~ / ~~Handwritten scribbles~~



~~Handwritten scribbles~~



2

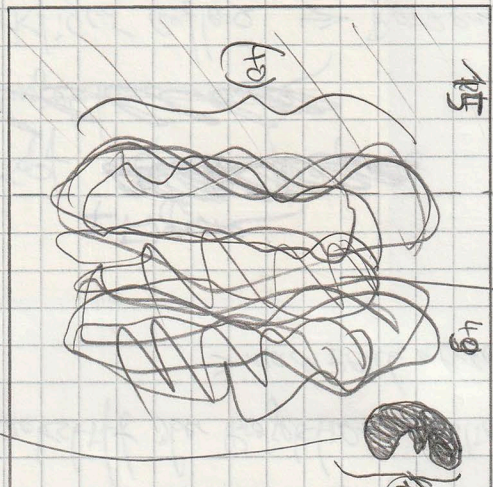
FEUERKINDER

Masstab 1:6

(= Original)
6

282 x 347

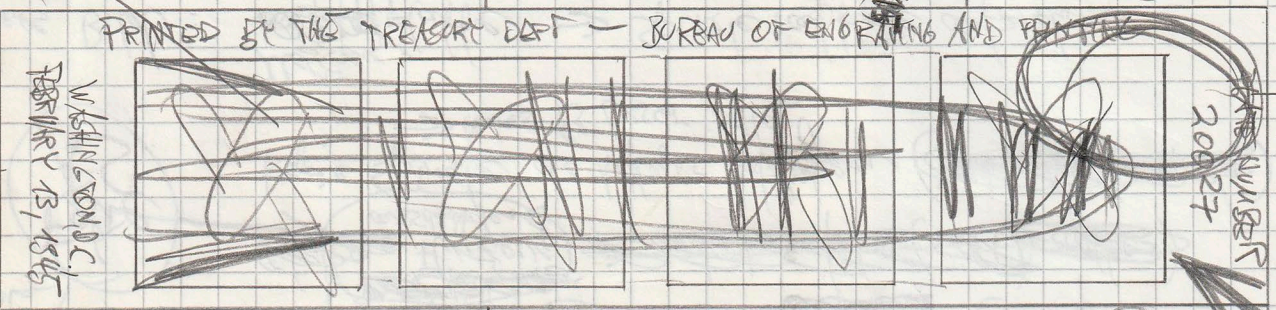
Rand 1mm = 0,15cm



Konturmodell
Vor-Schneide
(Klebe-Plan)
64

ca. 2g
Silberblech
von Spinnle
(Höle 15-)
spragelblech

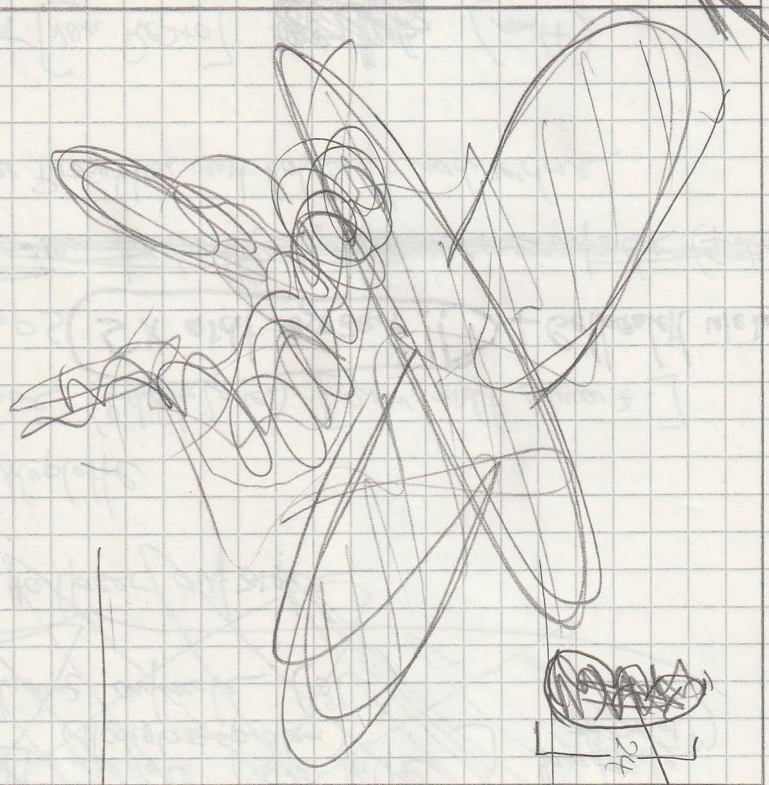
Kontur SW
Fraser



40
Konturmodell
Vor-Schneide

Stamps Kisten
Dagbladet 251

W.B. Klopffalle



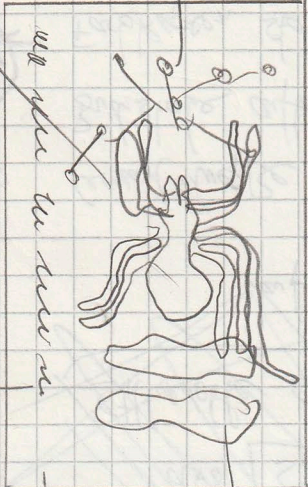
104

Spinnle Original
(Klebeplan)
(Höle 24)

Schleifene
Flysege
(Klebeplan)
ge 6

Pressblech
Klebeplan
(SW-Klebe)

416 (Höle 25)
spragelblech



wie wir in wir in

64/107

Spinnle von
Nizza

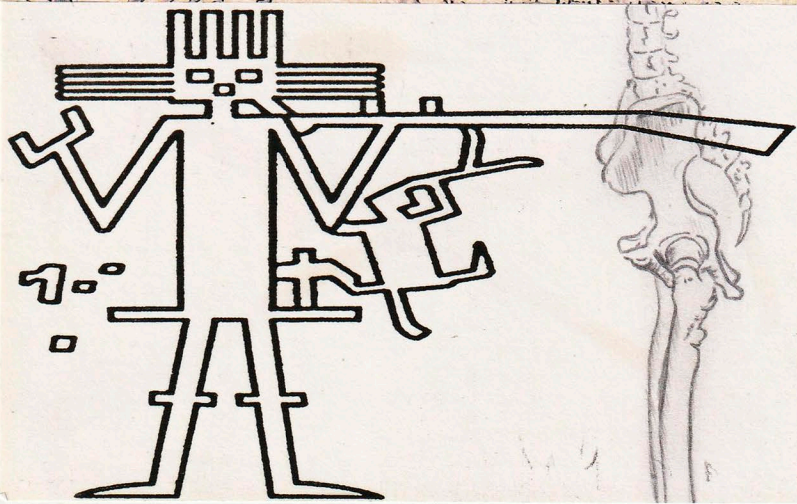
amb. Schnitt

→ Klopffalle

alles wie Vorlage
(W.B. Klopffalle)

#2: GROßFORMAT-AUSFÜHRUNG:

Linkes Bild: ~~30/64 rechte Hälfte~~ } Figuren etwas
~~40/64 rechte Hälfte~~ } ~~matte~~
~~24/64 linke Hälfte~~ } (glänzend!)



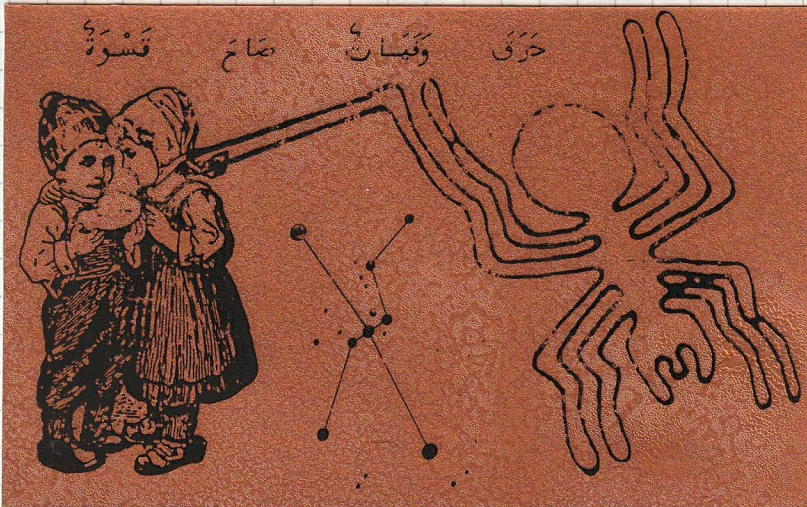
schwarz!]
 art!! + Gelbkeit wieder!
 Pulver → auftragen (Sprühgerät)
 oft nachzeichnen

(matt)
~~(glänzend)~~
~~(glänzend)~~

re aufziehen
 (Folienkopie des Modells)

Schwarzton

→ nachzeichnen

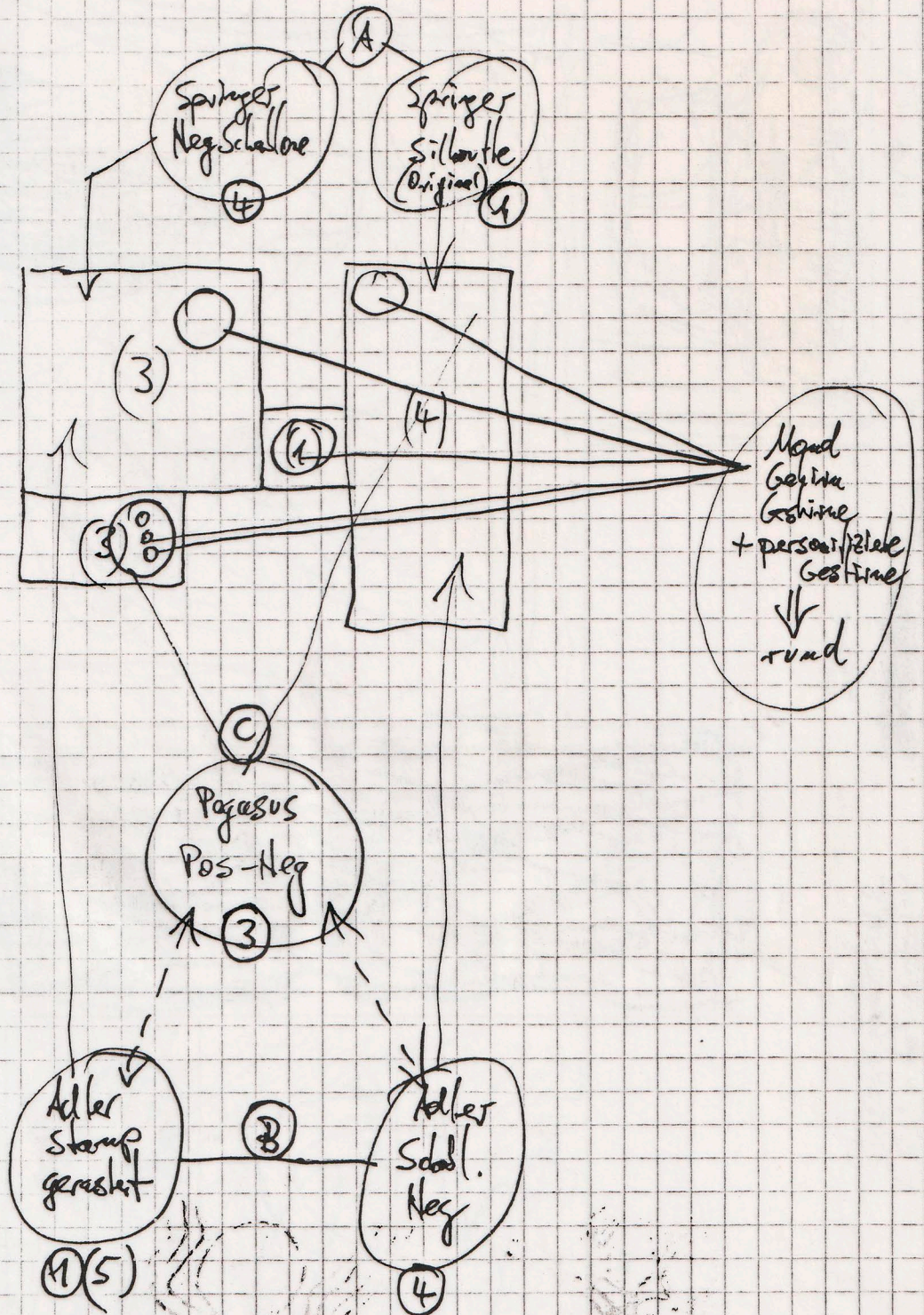


(F) Linkes

erzen (matt)

DYNAMISCH
NARRATIV

3



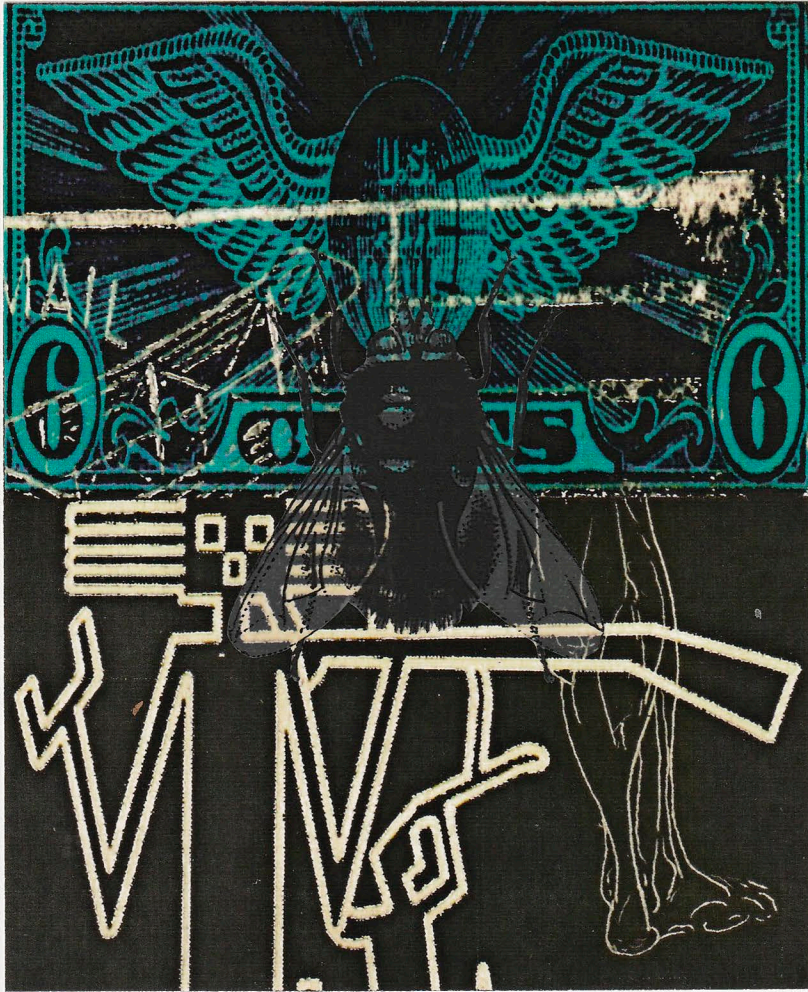
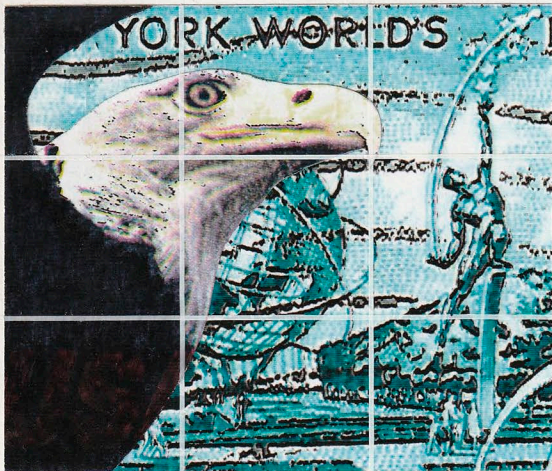


PLATE NUMBER 20046 X



ROANOKE ISLAND, N.C.

3

Stamps
Bok
(20046)

respektive
Wiederkehr
SPINARD
Silhouette
(Brotzen)

2/7
3/11
5/11
8/18
13/

WESTERN
(PUNKTE)
36/177

ROANOKE ISLAND, N.C.



14
20
32
PRINTED BY THE
TREASURY DEPARTMENT,
BUREAU OF ENGRAVING AND PRINTING

PLATE NUMBER 20046

37/66

56
17,1

Science

60/107

KURIER

Spain
Gold
Zentrum

37/66

Ausschnitt Handmade News
Single-Kefteger → Mordgas - Pegasus
Periscope → Spezialiser



60/107

156/278

Presse

unbelegte
Bild positiv
(bleulich)

dam
Silhouette
(Apostroph)
neu
(\$10.75-?)
Keller
respekt

#3
Großformat - Ausflieg

